

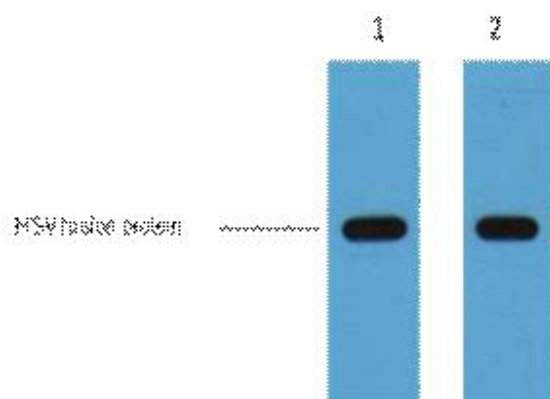


HSV-Tag Monoclonal Antibody(9D7)

Catalog No	YP-Ab-04736
Isotype	IgG
Reactivity	Species independent
Applications	WB
Gene Name	
Protein Name	
Immunogen	Synthetic Peptide of HSV-Tag
Specificity	The antibody detects HSV tag fusion proteins.
Formulation	PBS, pH 7.4, containing 0.5%BSA, 0.02% sodium azide as Preservative and 50% Glycerol.
Source	Monoclonal, Mouse
Purification	The antibody was affinity-purified from mouse ascites by affinity-chromatography using specific immunogen.
Dilution	WB: 1:5000
Concentration	1 mg/ml
Purity	≥90%
Storage Stability	-20°C/1 year
Synonyms	
Observed Band	
Cell Pathway	
Tissue Specificity	
Function	
Background	The HSV (herpes simplex virus) epitope tag is frequently engineered onto the N- or C- terminus of a protein of interest so that the tagged protein can be analyzed and visualized using immunochemical methods. The recognized HSV peptide epitope represents the amino acid sequence QPELAPEDPED. HSV Tag antibody can recognize C-terminal, internal, and N-terminal HSV-tagged proteins.
matters needing attention	Avoid repeated freezing and thawing!
Usage suggestions	This product can be used in immunological reaction related experiments. For more information, please consult technical personnel.



Products Images



1ug HSV fusion protein+ Primary antibody dilution at
1) 1:5000 2) 1:10000